



## SAN DIEGO 'N' LINE DANCERS

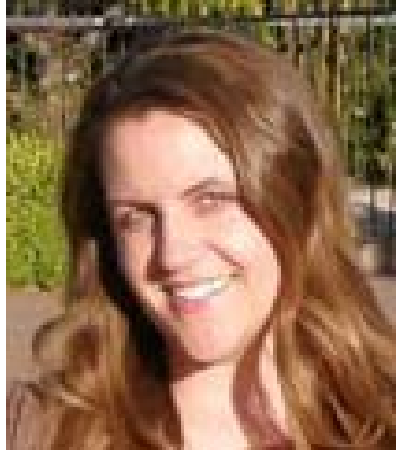
*Member of the International Dance Association of San Diego County  
Supported by the City of San Diego Park & Recreation Department*

### **WANNA MOVE LIKE JAGGER?**

---

**Here's your chance to learn it! It's requested every week in El Cajon, so Bracken will teach it at our Intermediate Workshop on Sunday April 10<sup>th</sup>.**

**Bracken will also teach her new dance, **Molecules**, and **Let's Run Away Together** choreographed by UCWDC Superstar, Barbara Seelt, from the Netherlands.**

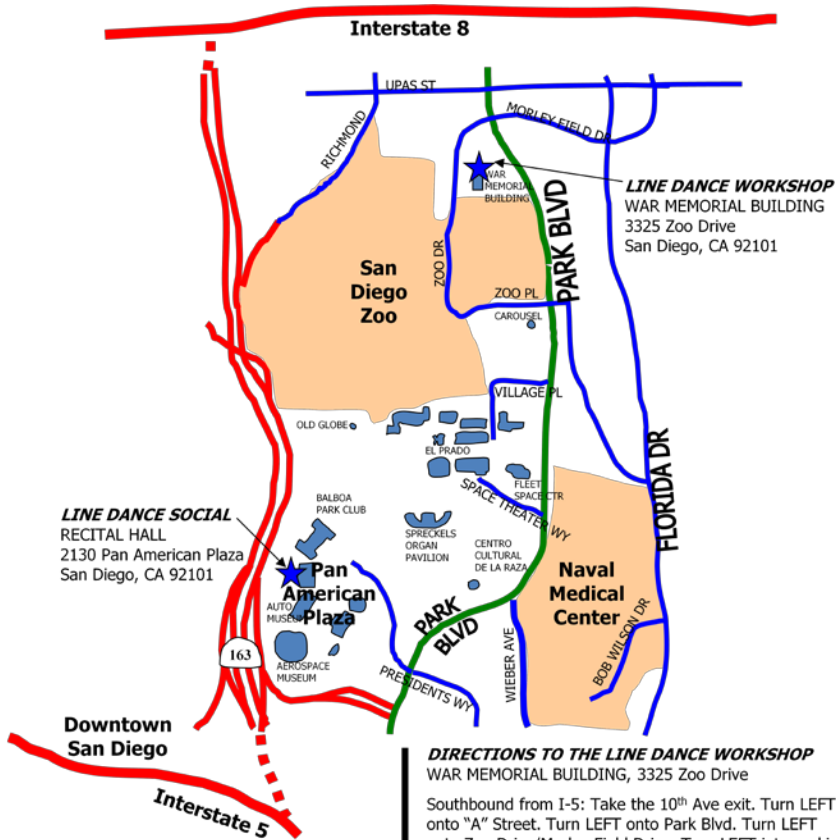


**There will be open dancing between teaches.**

**The Workshop is from 5:30 pm to 8:30 pm at the War Memorial Building (map on reverse side).**

**Admission: \$4 for Members / \$5 for Non-Members**

**Prior to the Workshop there will be a **READY TEAM** practice starting at 5:00. All are welcome to join in whether or not you are Ready Team members.**



**LINE DANCE SOCIAL**  
 RECITAL HALL  
 2130 Pan American Plaza  
 San Diego, CA 92101

**LINE DANCE WORKSHOP**  
 WAR MEMORIAL BUILDING  
 3325 Zoo Drive  
 San Diego, CA 92101

**DIRECTIONS TO THE LINE DANCE SOCIAL**  
 RECITAL HALL, 2130 Pan American Plaza

Southbound from I-5: Take the 10<sup>th</sup> Ave exit. Turn LEFT onto "A" Street. Turn LEFT onto Park Blvd. Turn LEFT onto Presidents Way. At Stop Sign, go straight and park.

Northbound from I-5: Take the B Street/Pershing exit to Pershing Street. Turn LEFT onto Florida Drive. Turn LEFT onto University Avenue. Turn RIGHT onto Park Blvd. Turn RIGHT onto Presidents Way. At Stop Sign, go straight and park.

Southbound from Hwy 163: Take the Park Blvd exit. Turn LEFT onto Park Blvd. Turn LEFT onto Presidents Way. At Stop Sign, go straight and park.

Westbound from Hwy 94: Stay straight to go onto F Street. Turn RIGHT onto Park Blvd (12<sup>th</sup> Ave). Turn LEFT onto Presidents Way. At Stop Sign, go straight and park.

**DIRECTIONS TO THE LINE DANCE WORKSHOP**  
 WAR MEMORIAL BUILDING, 3325 Zoo Drive

Southbound from I-5: Take the 10<sup>th</sup> Ave exit. Turn LEFT onto "A" Street. Turn LEFT onto Park Blvd. Turn LEFT onto Zoo Drive/Morley Field Drive. Turn LEFT into parking lot.

Northbound from I-5: Take the B Street/Pershing exit to Pershing Street. Turn LEFT onto Florida Drive. Turn LEFT onto Zoo Place. Turn RIGHT onto Park Blvd. Turn LEFT onto Zoo Drive/Morley Field Drive. Turn LEFT into parking lot.

Southbound from Hwy 163: Take the Washington Street East exit. Turn LEFT at exit onto 9<sup>th</sup> Avenue. Turn LEFT onto University Avenue. Turn RIGHT onto Park Blvd. Turn RIGHT onto Zoo Drive/Morley Field Drive. Turn LEFT into parking lot.

Westbound from Hwy 94: Stay straight to go onto F Street. Turn RIGHT onto Park Blvd (12<sup>th</sup> Ave). Turn LEFT onto Zoo Drive/Morley Field Drive. Turn LEFT into parking lot.